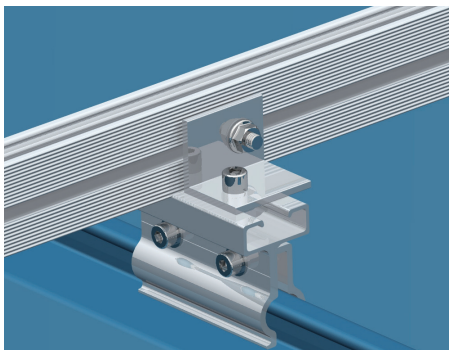
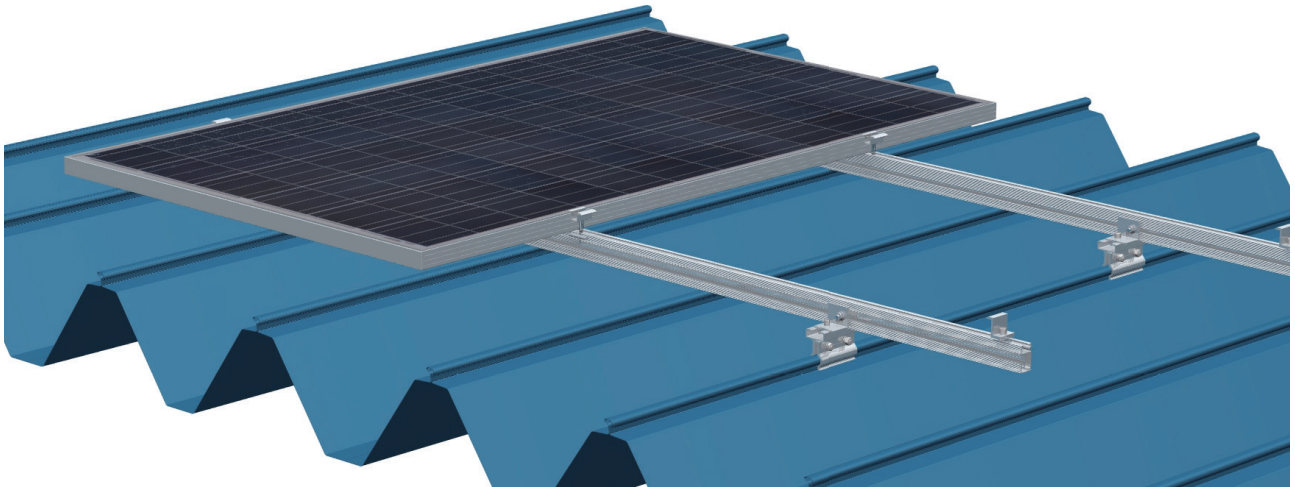


# MRA2-RD

## Tin roof mounting system

**MRA2-RD** The clip-on clamps eliminate the need of roof penetration on concealed type roofs.

**10 Years**



**88 m/s**

**200 mm**

**Standard**

JISC 8955:2017  
GB 50009-2012  
GB 50797-2012

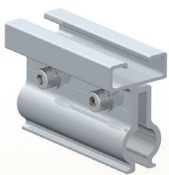
**Acceptance standard**

**gamcorp**  
Innovation in design and construction

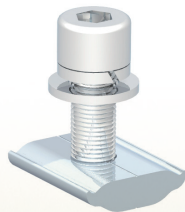
### Data

1. Material: AL6005-T5
2. Bolt material: SUS304
3. Wind load: 88m/s
4. Standard snow : 200mm
5. Max snow :800mm

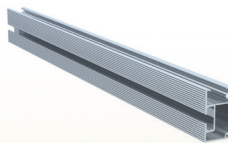
### Components



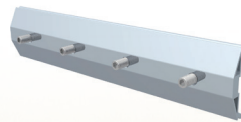
Cliplok AR02



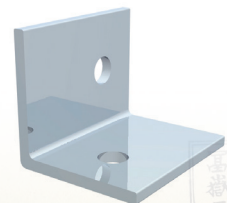
Allen bolt



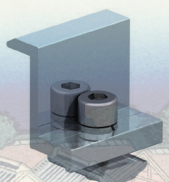
Rail



Rail joiner



Clip 59L00504



End clamp A840



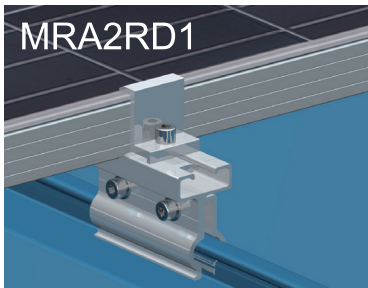
Mid clamp A740

富士山  
静かなる  
眺望、不二

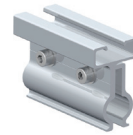
# MRA2-RD

## Tin roof mounting system

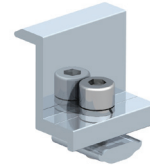
### Types



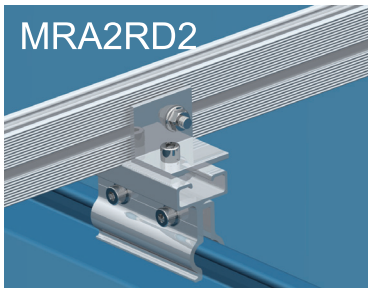
MRA2RD1



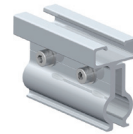
Clamp AR01



End clamp A840



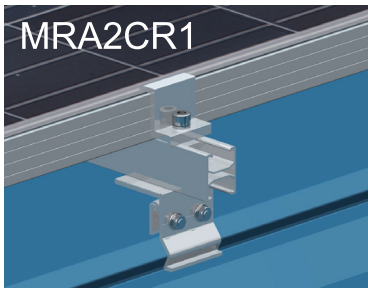
MRA2RD2



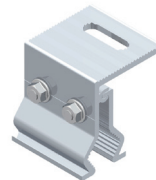
Clamp AR02



Clip A940



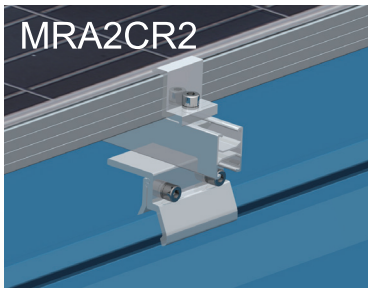
MRA2CR1



Clamp R01



Allen bolt



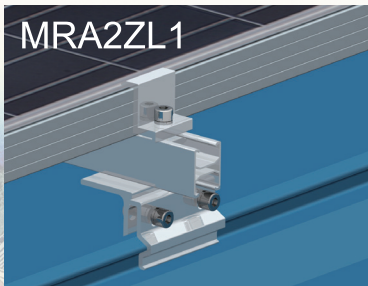
MRA2CR2



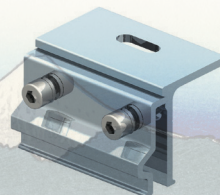
Clamp R02



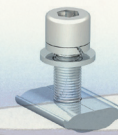
Allen bolt



MRA2ZL1



Clamp ZL01



Allen bolt

富士山  
富士山景  
眺望不二  
富士山景  
眺望不二